

Brighten Your Home With Natural Light.



Change Your Light. Change Your Life.



Your Home

Your home is a unique reflection of you and your style. But without proper lighting, your home may feel closed in and dark, making it difficult to read, cook, and even differentiate between colors. With Solatube® Daylighting Systems, you can turn any dark room into a sunroom—even those on the ground floor or in the basement. And because installing a Solatube Daylighting System can usually be done in about two hours, you can change your light and begin enjoying a better quality of life all in the same day. So what are you waiting for?



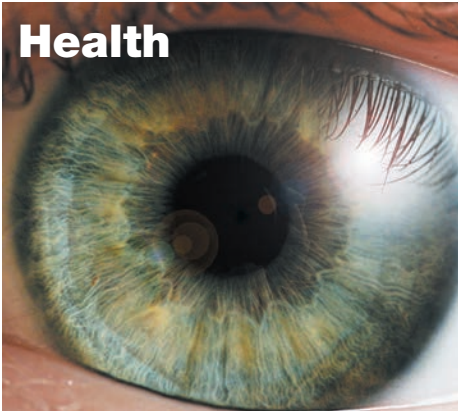
“We’re changing the way people think about natural lighting.”
—David Rillie
CEO, Solatube
International, Inc.



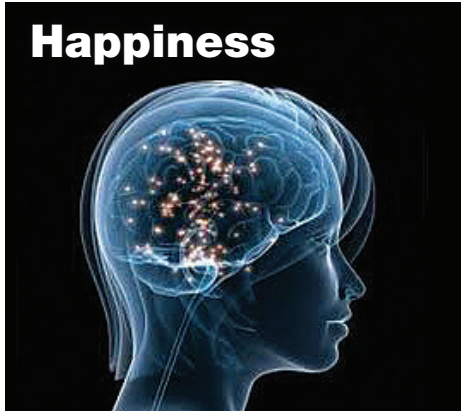
Daylight

Our busy schedules often prevent us from experiencing the things in life that are good for us, like spending time outside and soaking up the sunshine. But did you know that getting more sun could actually change your life for the better? The benefits of daylight are indisputable: Studies have shown that it can make you more productive by boosting your energy level; it can strengthen your mental abilities by improving your concentration; and it can enhance your well-being by lifting your mood.

In your home, the positive effects of daylight offer additional benefits. Interior spaces seem larger. Colors appear truer and brighter. Your environment feels more inviting. By utilizing daylight to brighten your interior spaces, you’ll also reduce your need for electricity, minimize the impact on the environment, and lower your utility bills. With a Solatube® Daylighting System in your home, you’ll receive all the benefits daylight has to offer even if you don’t have time to go outside and enjoy the sunshine.



Health
Daylight entering through the eye triggers hormone production that promotes healthy sleep / wake cycles, so you wake up feeling well-rested.



Happiness
Daylight causes your brain to produce serotonin, a hormone that can improve mood by alleviating pain, providing energy, and making you feel happy.



Well-being
People who get regular exposure to daylight tend to be more optimistic, sleep better at night and have a better sense of well-being.

Daylighting

Solatube® Daylighting Systems combine breakthrough optical technology with advanced designs and the highest quality materials to fill your home with an abundance of bright, natural light.

From sunup to sundown, a rooftop dome harvests daylight using our patented Raybender® 3000 Technology. The dome captures daylight from any angle, then transfers it to your interior through our highly reflective Spectralight® Infinity Tubing. Specially designed lenses disperse the light throughout your room, giving you a brightly lit space that costs nothing to light.



160 DS
Provides daylight for small to mid-sized areas up to 200 ft² like bathrooms, closets and halls.

290 DS
Delivers daylight to large spaces up to 300 ft² like kitchens, family rooms and bedrooms.

“Our systems selectively harness the wavelengths of light you need to bring the clearest, purest daylight into your home.”



—Neall Digert,
Ph.D., MIES

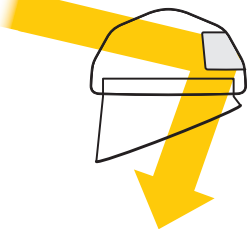
Capture

The story all begins with capturing daylight. We challenged our engineers to develop a dome that automatically adjusts daylight harvesting throughout the day while achieving demanding thermal performance requirements. The solution? The most advanced dome technology with the ability to virtually bend daylight.

LightTracker™ Reflector

An innovative in-dome reflector that:

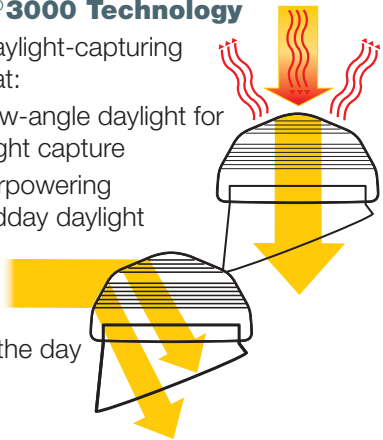
- Redirects low-angle winter daylight for maximum light capture
- Increases light input for greater light output
- Delivers unsurpassed year-round performance



Raybender® 3000 Technology

A patented daylight-capturing dome lens that:

- Redirects low-angle daylight for maximum light capture
- Rejects overpowering summer midday daylight
- Provides consistent daylighting throughout the day



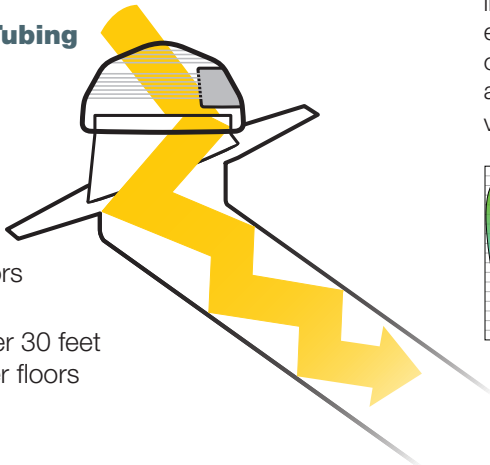
Transfer

How much does a bounce matter? You'd be surprised. Every time a ray of light is reflected, a small amount of that light is lost. And even a few percentage points in reflectivity make a huge difference in overall performance. It's that attention to detail that led us to develop the highest performing tubing available.

Spectralight® Infinity Tubing

The world's most reflective material that:

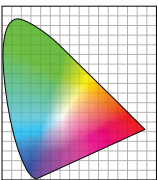
- Delivers 99.7% specular reflectivity for maximum daylight transfer
- Provides the purest color rendition possible so colors are truer, brighter
- Allows for run lengths over 30 feet to deliver daylight to lower floors




Superior Color Rendition

The unique spectral reflectance characteristics of Spectralight Infinity Tubing reflect the visible spectrum without color shift to deliver the purest color rendition possible.

It's performance like this that ensures the color you use in a space will be vivid and accurate.



| | | |
|--|--|--|
|  |  |  |
|  |  |  |
| Enhanced Aluminum | Enhanced Silver | Spectralight® Infinity |
| 95% Spectral Reflectance | 98% Spectral Reflectance | 99.7% Spectral Reflectance |

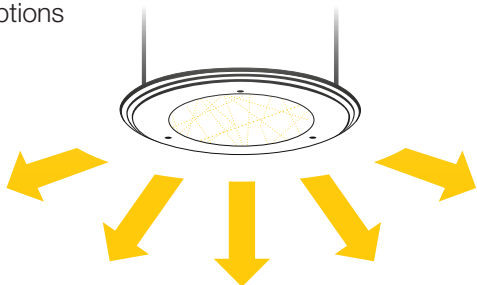
Deliver

What makes Solatube Daylighting Systems unique? The ability to offer amazing control over daylighting a space. From light control to diffusion, we've thought of virtually everything you need to bathe a space in pure, natural light.

Stylish Daylight Delivery

Form and function combine for optimal daylight diffusion with:

- Glass Solatube Decorative Fixtures
- Warming or softening Effect Lenses
- Ventilation, dimmer or nighttime lighting options



Go Beyond Functional to Beautiful

Decorative Fixtures

“Solatube’s Decorative Fixtures are really a dream come true for anyone who loves daylight and wants to customize the look of their home, just like they would with traditional lighting fixtures.”



—Denise Homme,
Interior Designer

Because we at Solatube® International, Inc. are homeowners too, we understand that it’s not enough to bring dazzling daylight indoors if the fixture delivering that light isn’t equally impressive. Solatube Decorative Fixtures enhance the look of any interior with styles that range from practical to elegant to dazzling.



TierDrop™

The low-profile TierDrop features a beautiful, cascading design for a classic look. Fits all models.



OptiView®

The unique, dazzling lens of OptiView delivers artful views of the sky in a low-profile design. Fits all models.



JustFrost™

Simply stunning, JustFrost showcases daylight in a clean, contemporary design. Fits all models.



AuroraGlo™

Available in bronze or white, this Model for the 290 DS will fit both your lighting needs and design sensibilities.



Classic Vusion™ Diffuser

Featuring a classically stunning design, the Vusion Diffuser delivers radiant light that complements any room. Fits all models.

The Ingredient for a Brighter Space

Kitchen

The kitchen is the heart of the home. It's where meals are cooked, studying is done, and families and friends gather. Natural lighting can enhance your experience by bringing out the color of food and making the meals you serve more appealing. It can improve concentration so homework gets finished quicker. It can even boost energy levels for more lively conversations. In addition, natural light can improve the look of your kitchen by bringing out the rich textures of your cabinets and counters. A Solatube® Daylighting System is the ingredient to make your kitchen a brighter place.

Benefits

- Detailed tasks such as cutting vegetables become easier and safer with natural light.
- Natural light lets colors burst forth, making salads look greener and more appealing.
- Daylight reduces eye strain, making it easier to read the small print in recipes.
- A Solatube Daylighting System enables light to be placed exactly where you need it to optimize activities like cooking, reading, and socializing.



“Use a Solatube Daylighting System to strategically place light for dramatic effect—such as over a kitchen island—or to increase visual acuity for room-specific tasks like cutting vegetables.”



—Andrew, Solatube Certified Installer

“It lit up my kitchen as if it had a wall of windows, even though it's an interior kitchen.”

—Ellen W.



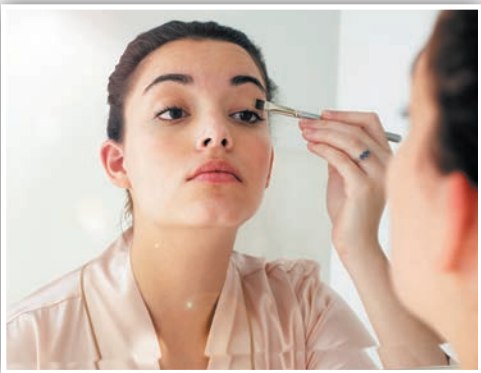
Shower Yourself with Natural Light

Bathroom

The bathroom is the place you get yourself ready for the world. But electric lighting can make it difficult to see well as you shower, shave, and apply makeup. This can lead to strained eyes, shaving injuries and makeup mishaps. Solatube® Daylighting Systems can help you avoid these issues by filling your bathroom with pure, bright daylight that improves visual acuity and color rendition. So go ahead and shower yourself with natural light in a bathroom that showcases the real you.

Benefits

- With natural light, reading the small print on medication labels is easier and causes less strain on your eyes.
- Makeup applied in artificial light can end up looking very different when viewed in natural light. Daylighting in your home lets you see how you really look before you venture out in public.
- Shaving in natural light can help you see better, so you can avoid nicks and missed spots.
- Electric lights can give off a yellowish glow, making even a clean bathroom feel grungy. A Solatube Daylighting System gives your bathroom a cleaner, airier feel.



“A Solatube Ventilation Add-On Kit can help control bathroom humidity caused by steamy showers.”



—Steve, Solatube Certified Installer

“Our bathroom was so dark with no windows, and now it’s like being outside. We love the natural light!”

—Mary L.



Enhance Your Active Space

Living Room

Whether you have a living room, family room or great room, this space is often the activity hub of a home. It's where people gather to socialize with friends, watch a favorite TV show, or curl up on the couch with a good book. A Solatube® Daylighting System can enhance this active space by using natural daylight to brighten dark spots and bring new life to your room.



“The optional Solatube Daylight Dimmer allows you to adjust the amount of light entering the room, and is the essential accessory for a room with a media center.”



—Mike, Solatube Certified Installer



Benefits

- Daylight in your home can reduce eye strain and make reading easier.
- Whether you're entertaining, working or watching TV, natural light can make any activity more enjoyable.
- If your living room is bordered by windows, a Solatube Daylighting System can help balance the interior and exterior light to reduce glare.

Feast on Daylight

Dining Room

It's no secret that food brings people together, and the dining room is often the setting for family dinners, holiday feasts, and cozy get togethers. When you add natural light to the mix, you'll make meals more mouth-watering and bring out the shine in your fine furniture and flatware. Add natural light with a Solatube Daylighting System and make these special occasions even more memorable.



“Entertaining in your dining room? I highly recommend installing the AuroraGlo Decorative Fixture. It brings elegance and warmth to one of your most popular spaces.”

—Justin, Solatube Certified Installer



Benefits

- Natural light brings out the color of vegetables and fruits and makes meals more appetizing.
- Decorate with daylight and bring out the rich decor of your dining room.
- Enhance your dining environment with natural light and make your gatherings more memorable.

Entry, Hallway, Stairs or Closet

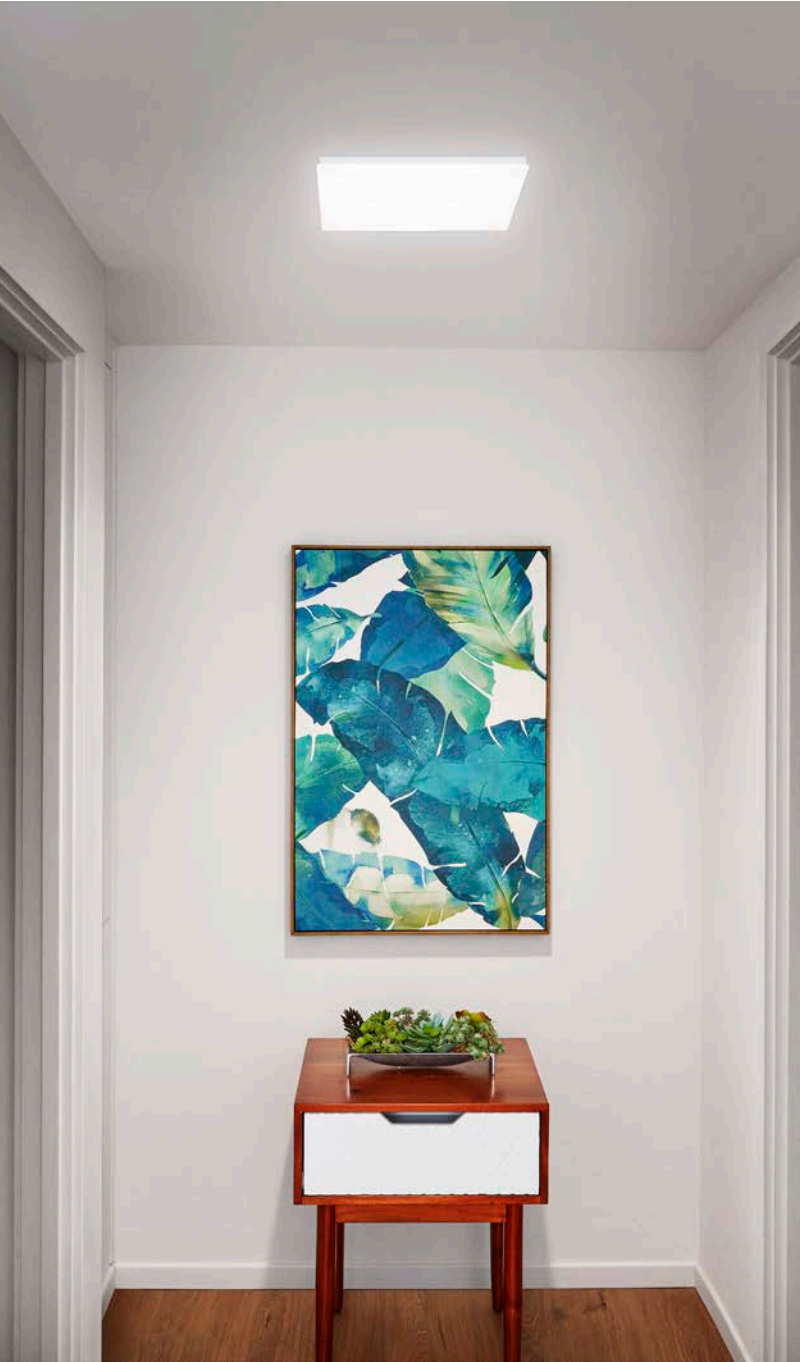
Hallways, entryways, stairwells, and closets are often overlooked when it comes to lighting. Although they are heavily trafficked, they remain missed opportunities for ensuring safety, showcasing colors and illuminating the architecture of your home. Solatube® Daylighting Systems allow you to bring daylight indoors so you can diminish the dark and transform even the smallest space into a showcase of light.



“Windowless hallways and stairwells are high traffic areas where artificial lighting is often the only option. Using natural light ensures safe passage and reduces the need for electricity.”



—Andrew, Solatube
Certified Installer



Benefits

- Make your home more inviting with entryways, hallways and stairwells that are brightly lit by daylight.
- Hallways often possess under-utilized wall space. With natural light present, this space can become a showcase for family photos and artwork.
- Adding natural light to a dark stairwell can open up the space and help prevent stumbles.
- Daylight aids in color rendition, so you'll see colors in their true state. Notice the difference between black and navy blue.
- Transform an entryway into a showpiece, providing guests with an inviting entry point to your home that makes them feel comfortable and welcome.

“After dark, a SolatubeLight Add-On Kit offers incandescent or fluorescent lighting with the flip of a switch.”



—Justin, Solatube
Certified Installer

“What a difference! My dark hallway now has light and my walk-in closet has natural lighting so I can see the actual colors.”

—Margaret B.



Wake Up to Daylight

Bedroom

There’s nothing like pure daylight streaming into your bedroom to welcome you to a new day. It wakens your senses, puts you in a good mood, and prepares you to take on the world. That same natural light can provide you with pure color rendition so you can select the perfect outfit. Its pure, clear rays also allow you to read a book or work on the computer without straining your eyes. When you harness the power of the sun with a Solatube® Daylighting System, your bedroom can become a place to spend not only your sleeping hours but your waking ones as well.



“We rate this as one of our best decisions in our home renovation.”
—Anna B.

Benefits

- Getting ready for the day is easier in natural light. Pure daylight renders colors in their true state, making it easy to find socks that match your pants.
- Natural light in the bedroom allows you to tune in to your natural waking and sleeping patterns, so you can wake up better rested.
- Today’s bedroom is used for sleeping, reading, dressing, watching TV, and even working on the computer. A Solatube Daylighting System provides just the right amount of light to meet all your needs.



Boost the Brightness

Laundry Room

Doing the laundry covers everything from sorting and washing to folding and ironing. And yet the laundry room is often small and poorly lit, making it difficult to distinguish between colors and mend clothes. Loading in pure, natural daylight can transform your laundry room into an environment that is as colorful and bright as the outdoors.

Benefits

- Daylight provides perfect color rendition, making it easier to sort clothes so you can keep your whites white and your colors bright.
- Electric lights emit a yellow hue, making rooms look dingy. The Solatube® Daylighting Systems deliver bright, clear daylight, so your laundry room will look crisp and clean.



Accessories

Each room in your home has a unique purpose, and your lighting can affect how well that purpose is realized. A young child’s room, for instance, may benefit from a Solatube® Daylight Dimmer for afternoon nap time while a hallway may require a Solatube Light Add-on Kit for nighttime navigation. In the bathroom, a Solatube Ventilation Add-On Kit can help keep humidity under control. With our unique line of accessories, you can get the functionality you want from your Solatube Daylighting System to meet the specific needs of your home.

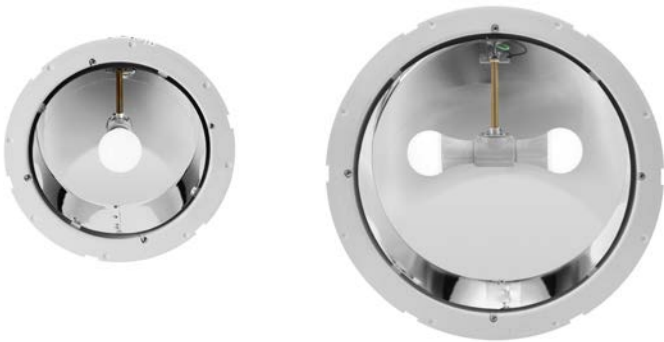
Ventilation Add-On Kit

Bathrooms and laundry rooms are prone to high humidity. The Ventilation Add-On Kit provides the dual convenience of ventilation with daylight. Plus, the attractive 2-in-1 design leaves your ceiling looking orderly and uncluttered. For even more functionality, consider adding a Light Add-on Kit for a dynamic 3-in-1 unit.



Light Add-On Kit

Your active life doesn’t slow down when the sun sets. For nighttime use, the Light Add-on Kit keeps your home bright with the convenience of a switched light so you can keep going long after nightfall. Great for lighting up bedrooms, bathrooms, closets, hallways and more.



Solatube’s attractive 3-in-1 design leaves your ceiling uncluttered unlike other options that can leave your ceiling littered with multiple entry points.

Dome Edge Protection Band

Made of galvanized steel, this optional component is used to maintain fire rating.



Shock Inner Dome

High Velocity Hurricane Zone areas such as South Florida require the Solatube Shock Inner Dome. This impact-resistant inner dome can also be added to any installation for extra protection from extreme environmental forces.



Flashing Insulator

This insulating material helps to reduce flashing condensation in cold climates when flashing is exposed to humid interior space.



Daylight Dimmer

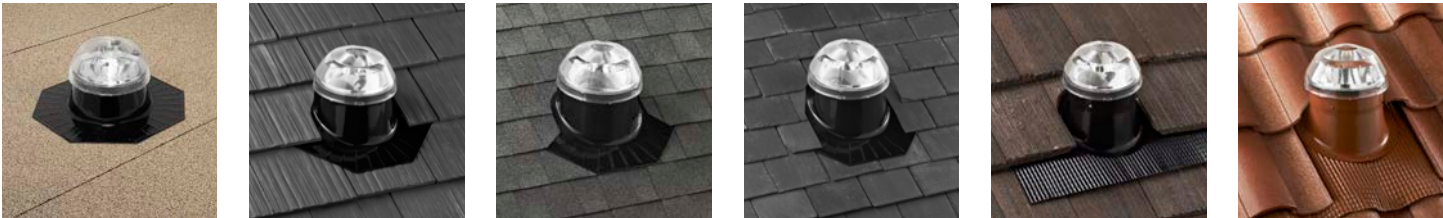
Control the amount of light entering a room with the convenience of a wall-mounted switch. The Daylight Dimmer features our patented butterfly baffle and is a smart option for matinee movie watching in living rooms or video gaming in game rooms.



Open 100% Open 50% Closed

Flashings

For fast and easy installation, Solatube flashings are available for nearly all roof types and pitches. The flashings provide complete protection, fabricated as a single, seamless piece to ensure leakproof performance.



Get professional installation by daylighting experts

Installation

Solatube® Daylighting Systems not only deliver optimal daylight to your home, they're also easy to install. Features like pre-assembled components, telescoping tubes, and angle adapters simplify system assembly while minimizing time and labor.

That said, you'll get the best results when you work with a Solatube Premier Dealer. These licensed contractors and residential daylighting experts are trained and certified in the sales, service and installation of Solatube products. Only Solatube Premier Dealers assess your lighting needs and provide a customized solution during a free in-home consultation, then expertly install your new daylighting system—all in about two hours.

Change Your Light and Change Your Life Today

Your home is your personal retreat from the busy world. Don't let underlit rooms cloud its beauty and leave you feeling trapped in darkness. When you change your electric lighting to a Solatube Daylighting System, you can transform your dark rooms into bright and beautiful spaces that are more colorful, spacious and inviting. Plus, you'll use less electricity, minimize environmental impact, and lower your utility bills.

Daylight in your home can also lead to a healthier lifestyle due to the numerous health benefits it offers, such as:

- **Increased productivity**
- **Enhanced concentration**
- **Heightened energy levels**
- **Healthier sleep /wake cycles**
- **Improved mood**
- **Better sense of well-being**

Let the beauty and style of your home shine through with natural daylight from a Solatube Daylighting System. It's the fastest and simplest solution to a brighter home and a healthier lifestyle. To make the change from electric to natural light, contact us today!



What Are Your Lighting Needs?

To assess your home lighting needs, select all statements that apply to you. Once you’ve completed this simple survey, one of our daylighting experts can work with you to create a custom natural daylighting plan for your home.

- ☐ I have difficulty reading a book due to insufficient lighting.
- ☐ My makeup looks different outside than it does inside my home.
- ☐ I must regularly ask family members to turn off the lights when they leave a room.
- ☐ I have trouble discerning between colors (e.g., black vs. navy).
- ☐ I often squint to read labels on medicine bottles.
- ☐ My home’s lighting makes it difficult to perform detail work such as threading a needle, cutting vegetables, or glueing small parts together.
- ☐ My indoor plants don’t seem to grow well in my current lighting.
- ☐ I have trouble seeing what I’m doing when I’m working with tools.
- ☐ My hallway is so dark that I have to turn on the light during the day.
- ☐ My entryway is dark because it’s shaded by outside trees or shrubs.
- ☐ The yellowish light from my incandescent lights make my rooms look dingy, even when I’ve just cleaned them.
- ☐ My house feels dark and small.

How Do Your Rooms Rate?

To determine your home’s current lighting situation, take this with you as you walk through each of your rooms during daylight hours. With the lights off, rank each room’s light level according to the scale below. Add up your score at the bottom.

Light Level Key:

- 0** Room is dark and always requires artificial light during day
- 1** Room is heavily shadowed and frequently requires artificial light during day
- 2** Room is lightly shadowed and requires occasional artificial light during day
- 3** Room is moderately lit and requires little artificial light during day
- 4** Room is brightly lit and requires no artificial light during day

Rooms:

| | | |
|-------------------|---------------------------|---------------|
| ____ Entryway | ____ Living / Family Room | ____ Kitchen |
| ____ Hallway | ____ Bedroom | ____ Bathroom |
| ____ Closet | ____ Laundry Room | ____ Garage |
| ____ TOTAL | | |

Score:

0-9: Your home is dark and you rely heavily on artificial light to see. A Solatube Daylighting System can add pure, bright sunlight to make your home feel more spacious, vibrant and inviting while reducing your reliance on artificial light.

10-19: Your home is dim and requires the use of artificial light frequently during daytime hours. A Solatube Daylighting System can brighten your home and reduce your need for artificial lighting.

20-29: Your home has a mix of light and dim areas. Natural daylight from a Solatube Daylighting System can enhance the beauty of your home while improving visual acuity for detailed tasks.

30-39: Although your home has adequate natural lighting, you may have certain areas where daylight from a Solatube Daylighting System could help with color rendition or specific task lighting.

Solatube® has many ways to keep you COOL.



Hot, stale air out.
Cool, fresh air in.

Ask us about our ventilation products

- Whole House, Solar Attic Fans, Garage Fans
- Save on air conditioning costs
- 2-hour, same-day installation
- Prevents moisture, mold and ice damming
- Quiet operation



©2019 Solatube International, Inc.

Solatube, Spectralight, OptiView, Raybender, LightTracker, QuadraFrost, JustFrost, AuroraGlo, TierDrop, Vusion and Innovation in Daylighting are trademarks of Solatube International, Inc. Other trademarks may apply. All rights reserved.